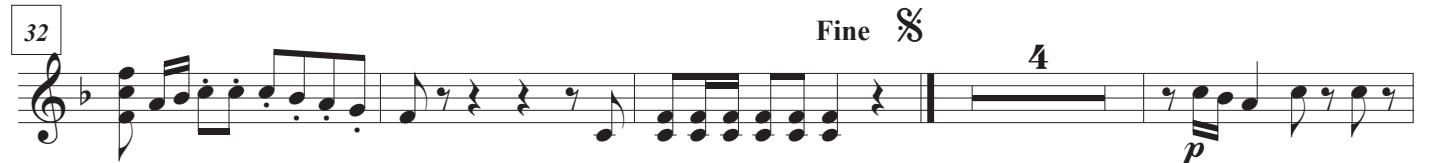


Violino I  
04/10/2024

# CONCERTO

per Org. é Cemballo, con Violini e Corni da Caccia (1770)

Quirino Gasparini



Violino I

44

48

54

58

61

67

74

80

85

92

96

105

*f*

*p*

[b]

*f*

*p*

3

2

2

2

5

3

Detailed description: This is a page of a musical score for Violino I, containing measures 44 through 105. The score is written in a single system with ten staves. The key signature has one flat (B-flat), and the time signature is 3/4. The music features a variety of rhythmic patterns, including eighth and sixteenth notes, and rests. Dynamic markings include *f* (forte) and *p* (piano). There are also articulation marks like accents and slurs, and performance instructions such as triplets (3) and slurs with fingerings (2, 5). A bracketed flat symbol [b] is present above a note in measure 58. The page number 2 is located at the bottom right corner.

Violino I

113

*p* *f*

117

D. C. al  $\text{§}$

II. Andante moderato (Corni tacet)

121

125

130

*f* *p* *f* *p* (*f*)(*p*)

134

$\text{§}$  *p*

139

145

153

*p*

159

Andante D. C. al  $\text{§}$

# III. Allegro

## Violino I

166

172

179

187 *fp* *p* *fp*

196 *p* *f*

204 *p* *f*

211 *p*

217 *p*

224 *[f]*  $\text{\textcircled{S}}$

234 8

252 *p*

259 3 6

Detailed description: This page of a musical score for Violino I covers measures 166 to 259. The music is in 2/4 time and B-flat major. It features a variety of rhythmic patterns, including eighth and sixteenth notes, and rests. Dynamic markings such as *fp*, *p*, *f*, and *[f]* are used throughout. Measure 224 contains a section symbol  $\text{\textcircled{S}}$ . Measures 234 and 259 include first and second endings, indicated by the numbers 8 and 6 above the notes. The score is written on a single staff with a treble clef and a key signature of one flat.

Violino I

277 *p*

283

293 [*f*]

302 3 2

314 3 *f*

325 4

336 *p* *p*

346

353 *b* *b* *b* 3 *b*

362 *b* *b* 6 *p*

375

383 *f*

Detailed description: This is a page of a musical score for Violino I, containing measures 277 through 383. The music is written on a single staff in a key signature of one flat (B-flat major or E-flat minor). The score includes various musical notations such as rests, eighth and sixteenth notes, triplets, and dynamic markings. Measure 277 starts with a piano (*p*) dynamic and features a triplet of eighth notes. Measure 293 is marked with a forte [*f*] dynamic. Measure 302 contains a triplet of eighth notes followed by a pair of eighth notes. Measure 314 features a triplet of eighth notes and a forte (*f*) dynamic. Measure 325 includes a four-measure rest. Measure 336 has piano (*p*) dynamics. Measure 353 shows a sequence of notes with flats and a triplet. Measure 362 has a six-measure rest followed by piano (*p*) dynamics. Measure 383 ends with a forte (*f*) dynamic and a fermata.

Allegro D. C. al