

VIOLA

03/10/2024

CONCERTO

per Org. é Cemballo, con Violini e Corni da Caccia (1770)

Quirino Gasparini



7



13



19



25



32

Fine §



39



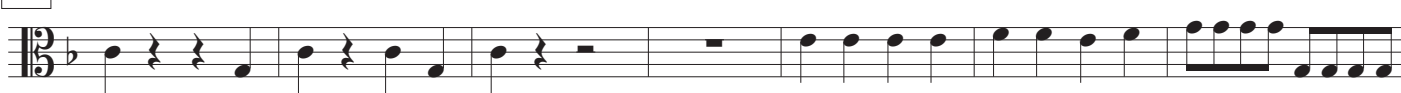
44



50



55



VIOLA

62

67

72

$\frac{2}{4}$

77

83

89

95

104

110

115

D. C. al

VIOLA

II. Andante moderato (Corni tacet)

121

3# 7^b 3#

126

132

138

143

148

153

(*fp*)

157

161

Andante D. C. al §

VIOLA

III. Allegro

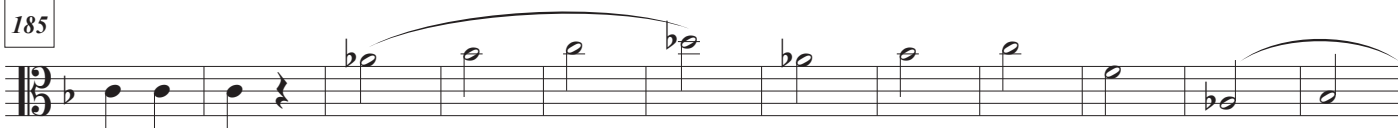
166



176



185



197



208



219



230



241



252



262



VIOLA

274

Musical notation for measure 274, starting with a treble clef, a key signature of one flat, and a 3/4 time signature. A '3' above the staff indicates a triplet of eighth notes. The measure contains a series of eighth notes with stems pointing up, followed by a quarter rest.

286

Musical notation for measure 286, starting with a treble clef, a key signature of one flat, and a 3/4 time signature. The measure contains a series of eighth notes with stems pointing up, followed by a quarter rest.

297

Musical notation for measure 297, starting with a treble clef, a key signature of one flat, and a 3/4 time signature. The measure contains a series of eighth notes with stems pointing up, followed by a quarter rest.

307

Musical notation for measure 307, starting with a treble clef, a key signature of one flat, and a 3/4 time signature. The measure contains a series of eighth notes with stems pointing up, followed by a quarter rest. There are two '3#' markings below the staff.

318

Musical notation for measure 318, starting with a treble clef, a key signature of one flat, and a 3/4 time signature. The measure contains a series of eighth notes with stems pointing up, followed by a quarter rest.

328

Musical notation for measure 328, starting with a treble clef, a key signature of one flat, and a 3/4 time signature. The measure contains a series of eighth notes with stems pointing up, followed by a quarter rest.

338

Musical notation for measure 338, starting with a treble clef, a key signature of one flat, and a 3/4 time signature. The measure contains a series of eighth notes with stems pointing up, followed by a quarter rest.

348

Musical notation for measure 348, starting with a treble clef, a key signature of one flat, and a 3/4 time signature. The measure contains a series of eighth notes with stems pointing up, followed by a quarter rest. A dashed line connects the notes in the second half of the measure.

358

Musical notation for measure 358, starting with a treble clef, a key signature of one flat, and a 3/4 time signature. The measure contains a series of eighth notes with stems pointing up, followed by a quarter rest. A dashed line connects the notes in the second half of the measure.

371

Musical notation for measure 371, starting with a treble clef, a key signature of one flat, and a 3/4 time signature. The measure contains a series of eighth notes with stems pointing up, followed by a quarter rest.

382

Musical notation for measure 382, starting with a treble clef, a key signature of one flat, and a 3/4 time signature. The measure contains a series of eighth notes with stems pointing up, followed by a quarter rest.

Allegro D. C. al